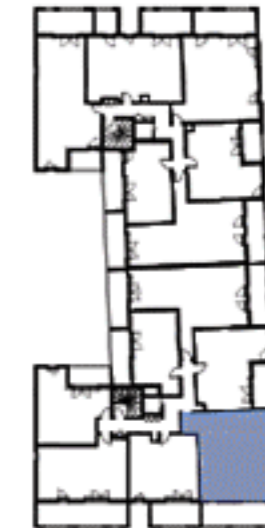
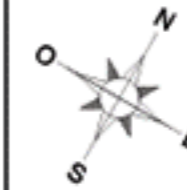
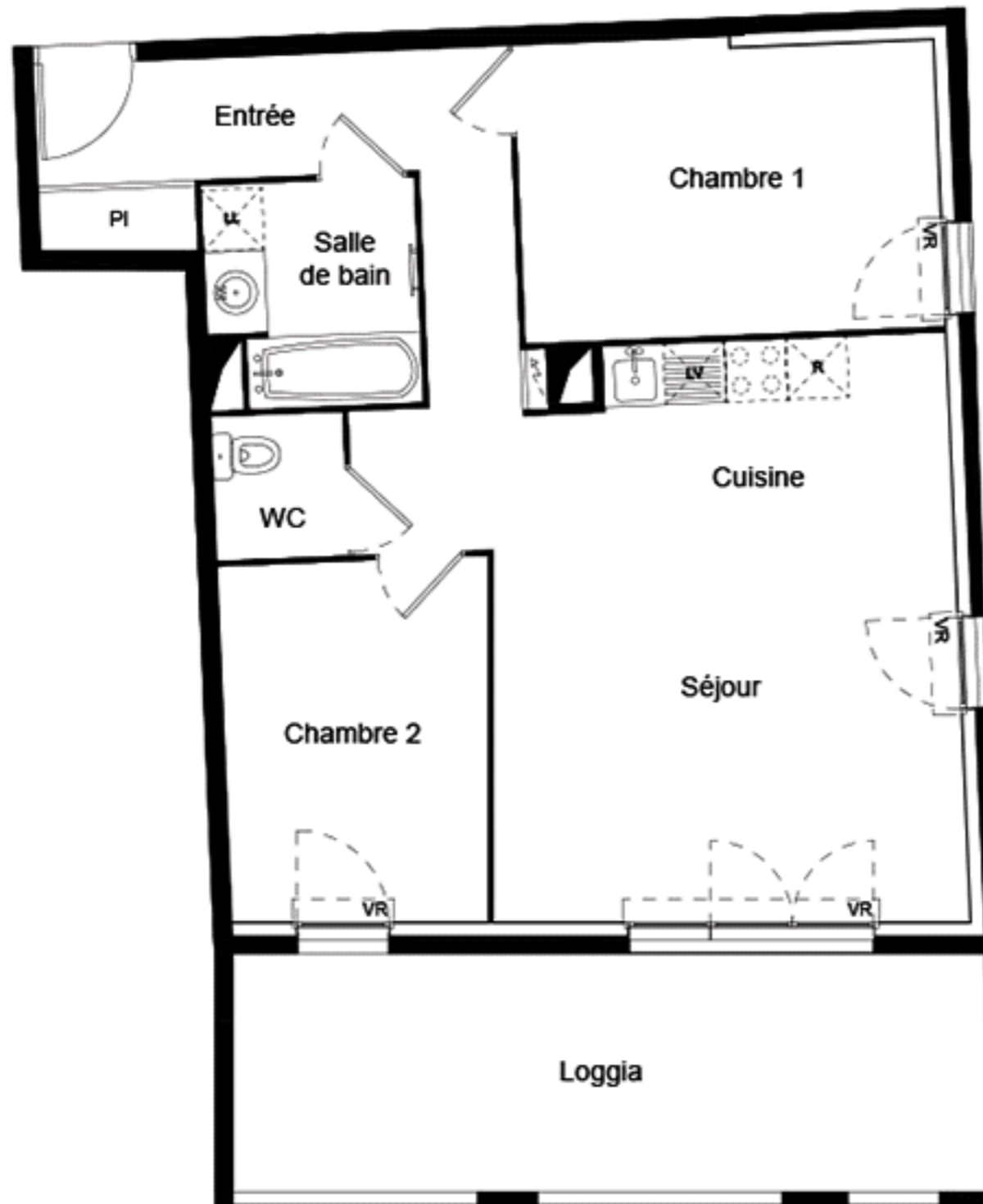


# PREMIERE AVENUE

## 520 Avenue des Près d'Arènes



Logement n°	T3
<b>A204</b>	R+2

### TABLEAU DES SURFACES HABITABLES

Entrée + PI	11,18 m <sup>2</sup>
Séjour - Cuisine	26,31 m <sup>2</sup>
Chambre 1	11,85 m <sup>2</sup>
Chambre 2	9,20 m <sup>2</sup>
Salle de bain	4,30 m <sup>2</sup>
WC	1,80 m <sup>2</sup>
<b>TOTAL Surface habitable :</b>	<b>64,64 m<sup>2</sup></b>
Loggia	17,30 m <sup>2</sup>

0 1 2 3m

