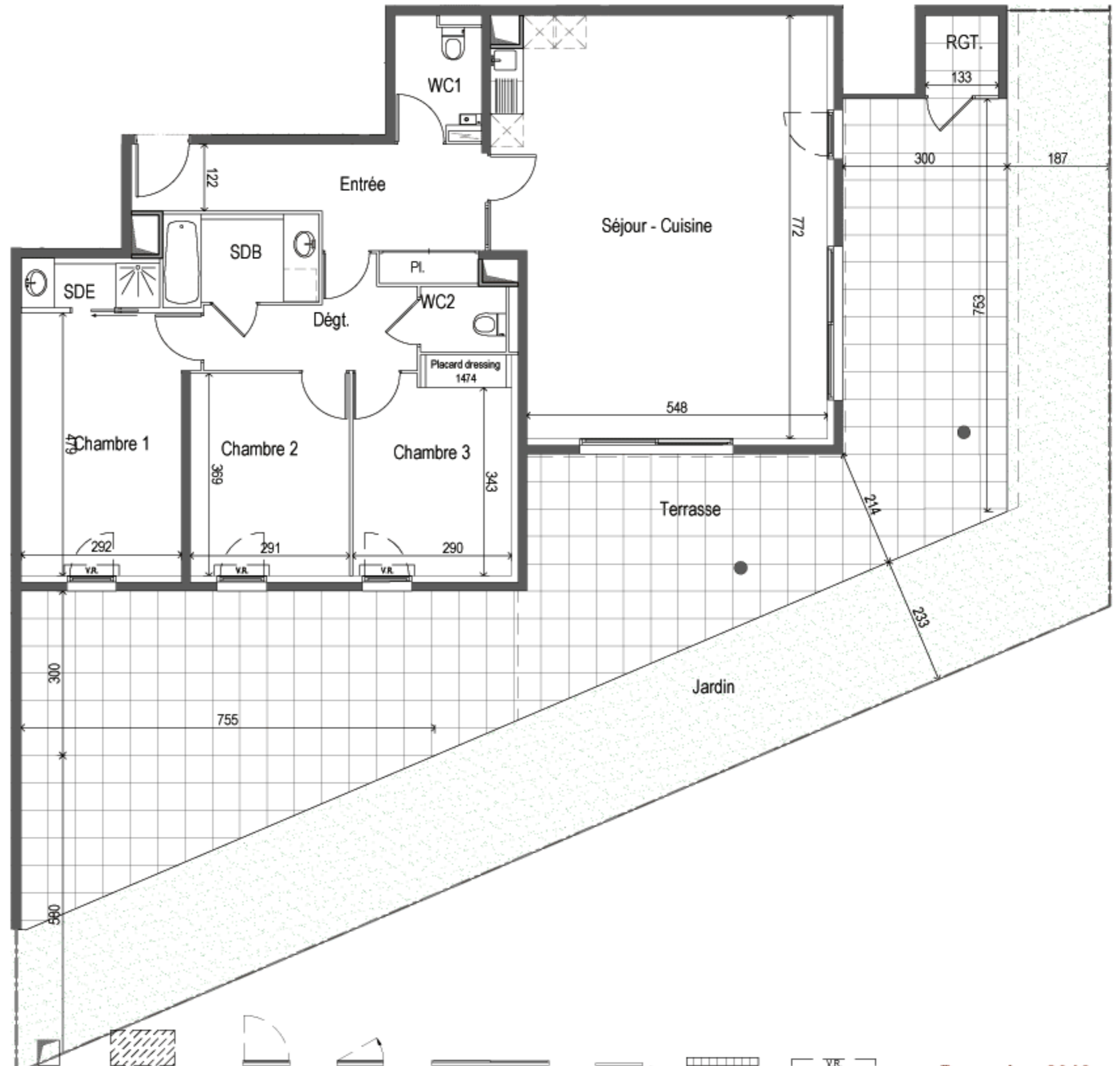
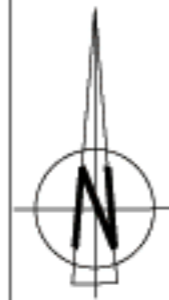
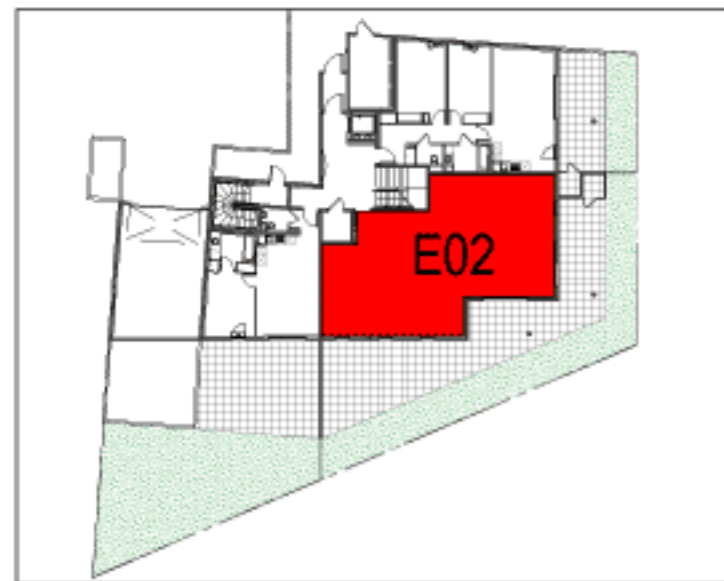
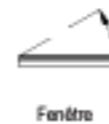


BATIMENT E	E02
RDC	
Type T4	



Entrée + Pl	10,90 m ²
WC1	3,10 m ²
Séjour - Cuisine	44,80 m ²
Dégt.	5,80 m ²
Chambre 1	14,30 m ²
Chambre 2	10,70 m ²
Chambre 3 + Pl	11,20 m ²
SDE	2,20 m ²
SDB	4,60 m ²
WC2	1,80 m ²
TOTAL S.H.	109,40 m²
Terrasse	84,40 m ²
Jardin	66,90 m ²
RGT.	1,90 m ²
TOTAL	262,60 m²



Decembre 2013